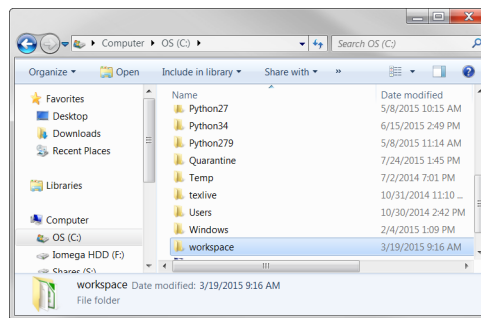


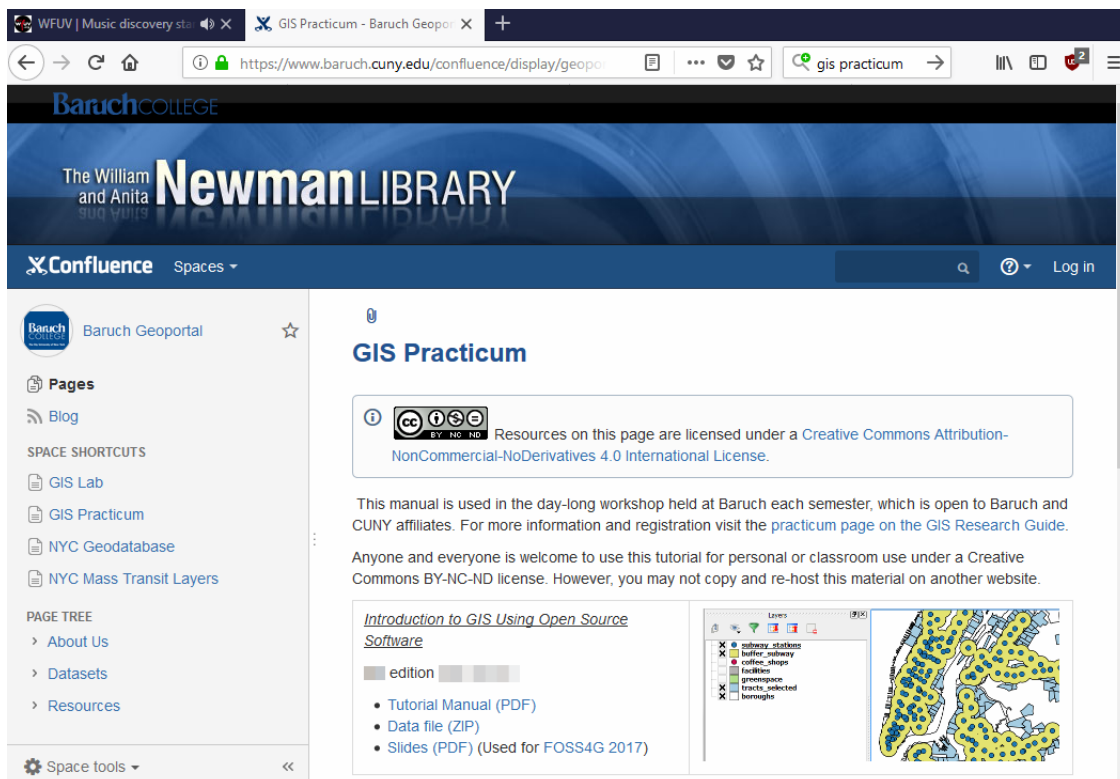
Downloading Data for the GIS Practicum

Frank Donnelly, Geospatial Data Librarian, Baruch College CUNY

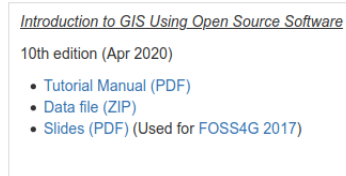
1. Use your file browser and create a folder (right-click, new folder) on your computer or usb drive called workspace - create it near the top; i.e. on MS Windows C:\workspace or E:\workspace so you can get to it quickly. DON'T place it under a My Documents folder or on the Desktop of your machine.



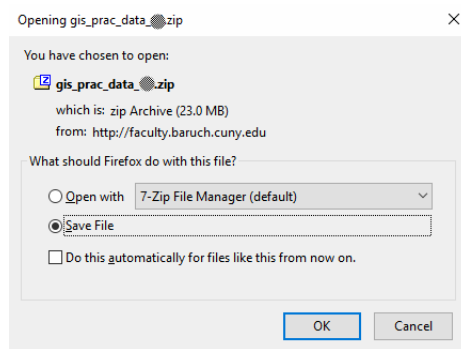
2. Go to the GIS Practicum manual page - if you do a web search for Baruch Geoport GIS Practicum it should be the first result (or, go to <https://www.baruch.cuny.edu/confluence/display/geoportal/GIS+Practicum>).



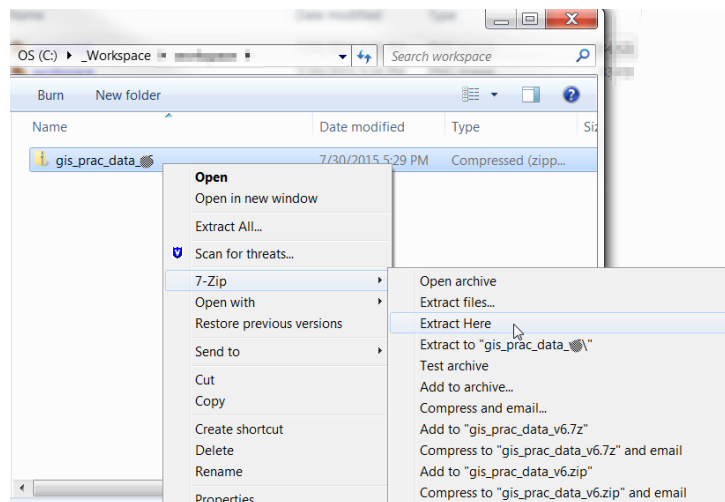
3. Click on the link for the data file.



4. Save the file (DON'T OPEN IT).



5. Use your file browser to go where the file was saved; depending on your browser this might be on the desktop or under your My Documents - Downloads folder.
6. Move the ZIP file from this location to your workspace folder.
7. In the workspace folder select the file, right click, 7 ZIP and choose the option that says Extract Here. If you don't have 7 ZIP use whatever unzip option your operating system has to unzip the file.



8. You should see a folder called gis_prac_data. Click on it and you'll see separate folders for each unit in the course.

